

Advance (Beyond Basic) Inlay **January 12th, 2020** Co-teaching Chuck Bruce & Micah Kirby

Construct an inlay bail & pendant (project 1), and student choice after, usually an inlay hinged bangle, bead knives, cuff links, belt buckle. Class will explore drilling into stone, stone in stone, stone cones, hingeing, stone on stone. but most choose a full inlay cuff (which I am known for). We accomplish this by using box construction with sterling silver sheet, either bezel or square or triangle or 1/4 round wire depending on project by soldering with hard wire solder and Prip's flux then rough cut stone with trim saw, grind to fit the void/channel/vessel then grind, shape & polish on Diamond Pacific Genie lapidary machines. Students can bring basic silver tools, composite cross lock tweezers, pocketknife or scribe, will have most tools needed. Students need to bring or purchase 2-3 slabs of rock that are similar hardness and can be combined for inlay. Pattern stones do very well with plain colored stone. Expect waste rock.

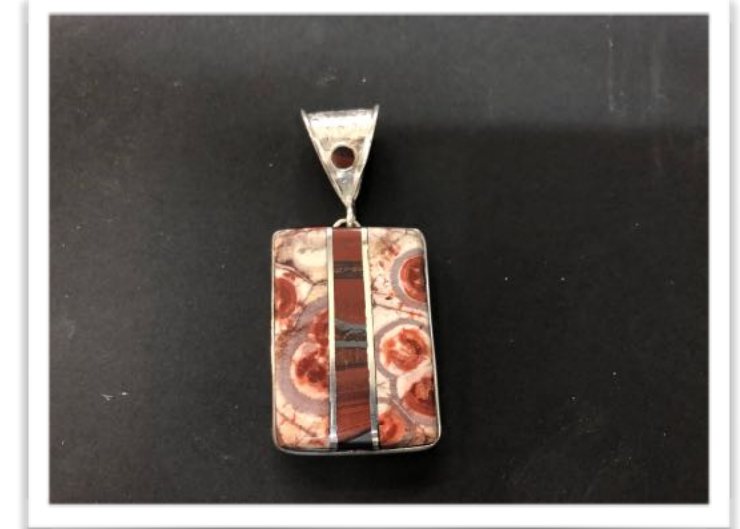
**Lab Fee:** \$150.00 Includes Sterling Silver for Project 1, all banding silver, pripp's flux, silver hard wire solder, saw blades, glues for inlay, stabilizer glues, dusk masks, 3M and black craytec wheels on dremel points, green scrubby, pencil and disposable goods. Does include some banding stones and wood.

**Estimate Material Cost:** lab fee includes 1st project, other materials plan on \$100 to \$300 depending on projects chosen.

**Level of skill or Prerequisites:** Inlay, Cabochons (Calibration and Shapes), Silver I, not an absolute must, but helpful

[www.chuckbrucedesigns.com](http://www.chuckbrucedesigns.com)

Inlaid Bail & Pendant



Hinged Bangle



Cufflinks





Inlay Bead



Belt Buckle



## Inlay Knives

